



Overview

Emperor Penguin Quest: Expedition to Snow Hill

In 2004, Quark Expeditions made polar history when they conducted the first-ever ground visit to the remote emperor penguin colony near Snow Hill Island, Antarctica. Driven by a true expeditionary spirit—and guided by years of polar expertise—our team sailed past masses of dense ice and thick, tabular icebergs in the Weddell Sea to experience the legendary rookery, which now numbers 8,000 breeding pairs of emperor penguins. Today, it is one of the most exclusive wildlife viewing experiences on the planet. We invite you—almost two decades after our milestone visit of 2004—to embrace the thrill of the search as we once again set out to visit to the emperor penguins at Snow Hill Island.

Experience a true polar quest as we journey on our new ship, *Ultramarine*, which is equipped with two twin-engine helicopters that will fly guests to the vicinity of this rarely-visited rookery, whereupon they will walk across the thick sea ice to stand within meters of the most coveted penguin species on the planet. Anticipate scenes reminiscent of “March of the Penguins” and BBC’s “Frozen Planet.” Just imagine the penguins tobogganing across the ice towards the sea. Such wildlife moments are too precious for words!

EXPEDITION IN BRIEF



Embrace the expeditionary spirit on a quest to reach the colony of thousands of pairs of emperor penguins and their chicks



Spend five days in the vicinity of Snow Hill, either on tour to the colony, or immersing yourself in our custom-designed Weddell Sea experiences



Travel aboard our new ship *Ultramarine*, enjoying the sauna or one of the ship's many other onboard amenities



Enjoy the intimacy of traveling on a ship with a reduced capacity of 150 guests



Additional staff means there will be one expedition team member for every four guests



Learn from polar experts during our enhanced onboard education program



Enjoy helicopter sightseeing and Zodiac cruising for unique perspectives of the Antarctic Peninsula.



Itinerary

DAY 1 | ARRIVE IN BUENOS AIRES, ARGENTINA

Upon arriving in this fascinating city, known for its architecture and rich European heritage, you will independently transfer to your group hotel (pre-expedition hotel night included in mandatory transfer package).

DAY 2 | FLY TO USHUAIA & EMBARK

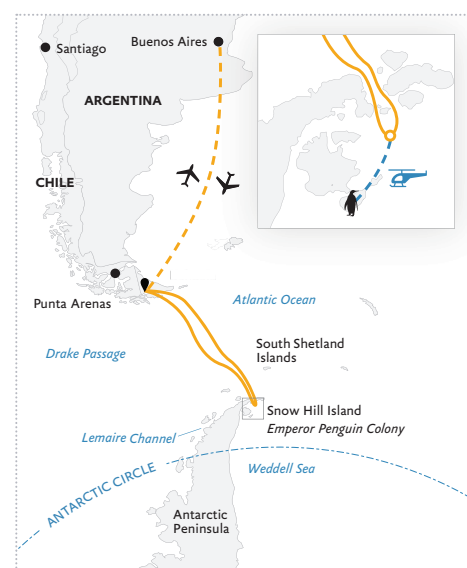
After an early breakfast at the hotel, your group will transfer to the airport and board our private charter flight to Ushuaia, Argentina.

Upon arrival, you will be transferred from the airport to a central downtown location to enjoy time on your own to explore quaint Ushuaia—the world's southernmost city—before making your way to the pier. After a late afternoon

embarkation, you will sail along the historic Beagle Channel, which transects the Tierra del Fuego archipelago in the extreme south of South America. Enjoy the air of anticipation as you depart—the next land you see will be the Antarctic!

DAYS 3 & 4 | CROSSING THE DRAKE PASSAGE

The unpredictable and exciting Drake Passage, which lies at the confluence of the Pacific, the Atlantic and the Southern oceans, is an adventure unto itself. While being well taken care of by our expert onboard staff and expedition team, you'll have plenty of time to gaze out at the expansive ocean waters, photograph seabirds as they swoop around the ship, and get to know your Expedition Team and fellow travelers.



EMPEROR PENGUIN QUEST Expedition to Snow Hill

- On board *Ultramarine*
- - - Flights to/from Buenos Aires
- Approximate ship drifting position
- Emperor Penguin Colony

DAYS 5 | NAVIGATING INTO THE WEDDELL SEA

Onboard presentations by world-respected experts will enrich your polar quest, conveying what it was like a century ago for the brave polar heroes who embraced the unknown. You'll also learn more about the ice-dwelling emperor penguins.

DAYS 6-10 | WEDDELL SEA AND THE QUEST TO LAND AT SNOW HILL

The journey toward Snow Hill Island will put you in explorer mode as the captain and Expedition Leader keep you updated through weather briefings, meteorological and sea ice condition reports. The thickness of ice will determine how close *Ultramarine* can get to Snow Hill Island, then our twin-engine helicopters will take over.

Like summitting a mountain from base camp, parties will set out from *Ultramarine* towards the emperor penguin colony. Their adventure begins with an extended helicopter transfer that will reveal a landscape of snow-capped peaks and apartment-building-sized tabular icebergs. The rookery itself is located on the sea ice off the south coast of Snow Hill Island and the landing will be as close to the penguins as possible, yet at a safe distance to avoid disturbing the birds. Upon landing, your party will walk across the ice to the fabled emperor penguin colony. The wind. The ice beneath your feet. Walking next to paths in the snow carved by penguins that came before. And then there are the incredible sounds of the penguins in the distance as you march toward one of the rarest wildlife opportunities on the planet: the colony of thousands and thousands of rarely-seen emperor penguins.

The goal of the expedition is to get every guest to the remote rookery once. The Expedition Team and special experts will be close by to answer your questions and ensure you take in everything there is to see. You'll observe close up how the emperor penguins behave as a tight-knit community, how they care for their young, and how they body surf across the ice in a way that can only be described as quirky yet efficient. The helicopter expedition in search of the emperor colony might just be the adventure of a lifetime!

And while at base on *Ultramarine* with your attentive Expedition Team, you'll be immersed each day in the polar experience of the Weddell Sea. Daily activities will include Zodiac cruising among the icebergs, adventuring and learning while atop the ice, paddle-on-top kayaking, or working with our team to observe the weather forecasting and ship operations up close.

A particularly enriching component of your voyage will be the bespoke educational programs tailored specifically for this expedition that offer both traditional (lecture format) and hands-on opportunities for learning about this fascinating region. Each day our polar experts, who include penguin scientists, biologists and polar historians, will present on various aspects of emperor penguins and their behaviors, ice formations such as the tabular icebergs which you'll see from the deck of your ship, and the experiences of polar explorers who braved the Weddell Sea over a century ago. Or you might, on one of these days, decide to take the polar plunge, or test your balance on a stand-up paddleboard. Then again, maybe you'll enjoy a little pampering.

If so, you can choose from *Ultramarine's* excellent onboard amenities, including the spa, sauna and fitness room.

The emperor penguin colony at Snow Hill is the goal of this expedition. However, if weather or ice conditions prevent us from visiting the colony or shorten the duration of our visit, we may explore some other sites. Your possible landings in Antarctica will take place on the eastern side of the Peninsula, which is an extension of the Transantarctic Mountains and is the most northern stretch of Antarctic land.

For more details on these possible alternate Antarctic landing sites, please see page 16.



EXPEDITION SPIRIT

Embracing the unexpected is part of the legacy—and excitement—of expedition travel. Throughout the voyage your Expedition Team must consider the sea, ice and weather to guide the route and itinerary details. This itinerary is a proposed outline of what you may experience on this voyage; please be aware that no specific itinerary can be guaranteed. Your visit to the remote emperor penguin colony at Snow Hill as described is expected, but not guaranteed. Your Expedition Team will use their considerable experience in Antarctica to ensure you witness various wildlife species and ice formations on route to Snow Hill Island.

DAYS 11-13 | CRUISING

The journey back across the Drake Passage provides a final opportunity to enjoy the invigorating Southern Ocean air. Spend time on the deck watching for seabirds and scouting for whales, enjoy presentations by your Expedition Team, and celebrate the experiences you've shared getting off the beaten track in the remarkable world of Antarctica.

DAYS 14 | DISEMBARK IN USHUAIA AND FLY TO BUENOS AIRES

You will arrive in Ushuaia in the morning and disembark after breakfast. The mandatory transfer package includes a tour of Tierra del Fuego National Park for a taste of Patagonia, after which you'll transfer to the airport for the return group charter flight to Buenos Aires.

Ultramarine was built for this type of expedition

- › This voyage leverages the best elements of *Ultramarine's* unique design and extraordinary expedition-focused features.
- › Our best-in-class H145 twin-engine helicopters are utilized for their added range and passenger capacity, allowing us to shuttle guests to the landing area in a short period of time. Our helicopters are equipped with noise-reduction technology that minimizes impact on wildlife.
- › *Ultramarine's* 1A+ PC6 ice class allows her to safely and confidently navigate several kinds of Antarctic waters and ice conditions, allowing the ship to venture further into remote regions of the Antarctic.
- › The water-level Zodiac hangars enable quick-deploy Zodiac cruising, allowing us to enrich the guest experience and make the most of our time in the Weddell Sea.





Arrival and Departure Details

As you prepare for your journey, you may be interested in your arrival and departure details. Since international air transportation is not included in the cost of your expedition, you have some flexibility in planning your flights. Looking to extend your adventure beyond your polar expedition? On page 14, learn how to add on a pre- or post-expedition stop—or both!—in your gateway city.

Arrival Day and Embarkation

ARRIVING IN BUENOS AIRES

Upon arrival in Buenos Aires, you will make your way to the included group hotel. A presentation room will be open from 12pm to 8pm for luggage weighing and tagging. A Quark Expeditions® representative will be available to answer your questions and give information about the next day's flight and ship embarkation. After an early breakfast the following morning, your group will transfer to the airport and board our private charter flight to Ushuaia, Argentina, the southernmost city in the world.

USHUAIA AND EMBARKATION

Upon arrival in Ushuaia (Day 2 of your itinerary), you will be transferred from the airport to have some free time to explore this quaint port town before making your own way to the meeting spot near the pier. We will transfer as a group to the ship for embarkation around 4pm.



PLEASE NOTE

There is a strict luggage limit of 50 lbs (23kg) checked luggage and 17 lbs (8 kg) cabin baggage on the flights between Buenos Aires and Ushuaia. Should you have additional luggage, it can be stored at the hotel in Buenos Aires. There is NO option to pay for additional luggage.

Final Day and Departure

DISEMBARKATION IN USHUAIA

The ship is scheduled to arrive back at the pier in Ushuaia between 7am and 8am. After breakfast you will bid farewell to your Expedition Team before completing your disembarkation. This process takes approximately one hour. After disembarkation, the mandatory Buenos Aires hotel and transfer package includes a short tour of Tierra del Fuego National Park before transferring to the airport for our return charter flight to Buenos Aires.

DEPARTING FROM BUENOS AIRES

Upon arrival in Buenos Aires, you may be able to connect directly with your homeward flight, as we will land at Ministro Pistarini International Airport (also known as Ezeiza International Airport, EZE) at 5pm. Please be sure to allow at least three hours between our charter arrival and your international departure, however we recommend that you do not book departing flights from the international airport before 9pm.

If your plans will take you onward in South America, please check your flight schedule to confirm your connection before booking. Upon arrival in Buenos Aires, you may need to transfer from the international airport (EZE) to the domestic airport, Jorge Newbery (also known as Aeroparque, AEP), which is located about a one-hour drive away under normal traffic conditions. If you must transfer between airports on the final day of the voyage, you can choose to use the efficient airport shuttle service, Manuel Tienda León, or take a *remis* (a pre-paid taxi booked inside the airport). If you prefer, your Polar Travel Adviser can also arrange for a private transfer. As traffic can add time to the commute, we recommend that you allow at least five hours between flights arriving and departing from the different airports in Buenos Aires to allow for transit, check-in, and security clearance.

For the absolute safest travel plans, we recommend that you book an extra hotel night in Buenos Aires between flights.

Included Hotel Accommodations

Your included accommodation begins on Day 1 of your itinerary. The specific hotel will be indicated on your final voyage confirmation. If you are arriving prior to Day 1 of your expedition or are staying after the disembarkation day and would like help booking a pre- or post-stay, please contact your preferred travel agent or Quark Expeditions® for hotel options. As accommodation space is limited, you are encouraged to request any extra nights as early as possible.

Arrival and Departure Transfers

BUENOS AIRES AIRPORT TRANSFERS

Arrival and departure transfers in Buenos Aires are not included; however, a Polar Travel Adviser can arrange them for you.

We request that you provide your flight details to Quark Expeditions® at least 30 days prior to traveling.



PLEASE NOTE

Weather conditions may occasionally delay our arrival, and airline schedule changes have also been known to occur in Argentina. Booking flexible tickets is always encouraged, as we cannot be held responsible for delays due to unforeseen circumstances.





Your Ship

NEW! ULTRAMARINE

The newest ship in our fleet, *Ultramarine* is designed to go beyond the familiar in polar exploration, to discover new places, and to engage you in the best the region has to offer.

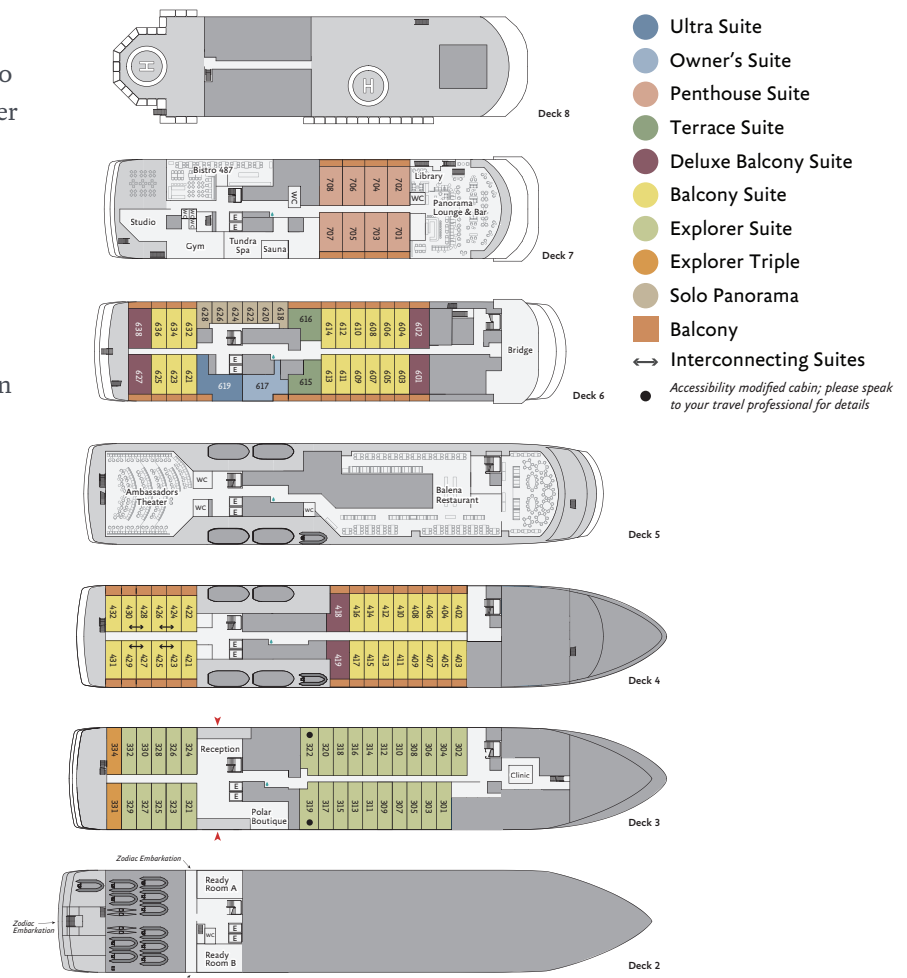
Equipped with two twin-engine helicopters, *Ultramarine* offers the most robust portfolio of adventure activities in the industry, and features the category's most spacious suites, breathtaking public spaces, and more outdoor wildlife viewing spaces than other expedition ships its size, complemented by an innovative mix of sustainability features that exceed all industry standards.

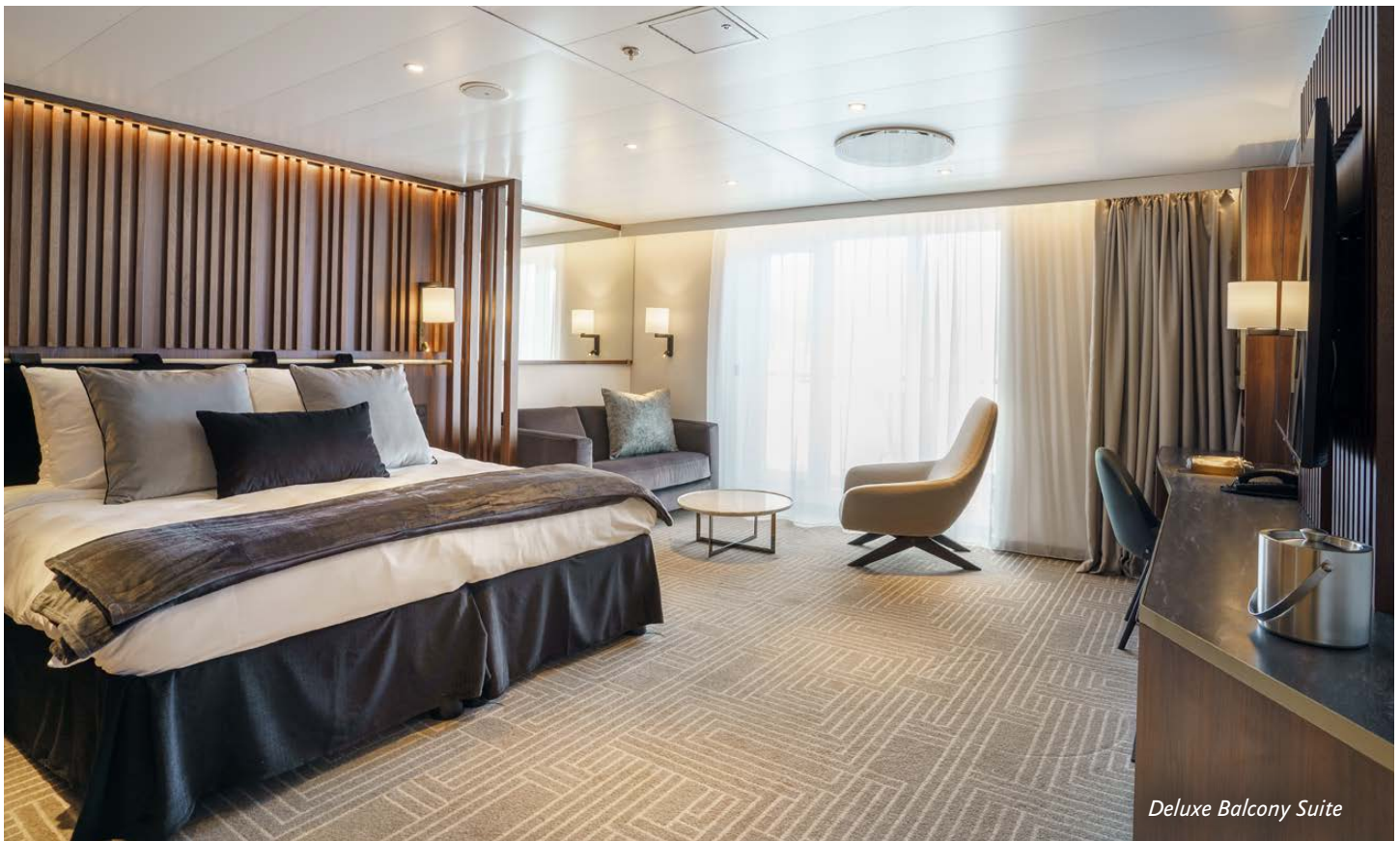
With all this and more, *Ultramarine* is perfectly designed to deliver the ultimate polar expedition experience.

SHIP SPECIFICATIONS:

Staff & Crew: 140
 Guests: 150
 Lifeboats: 4, fully enclosed
 Ice Class: PC6

Visit QuarkExpeditions.com to view deck plan details.





Deluxe Balcony Suite



Sauna



Panorama Lounge



Fitness Center



Balena Restaurant



Included Activities

Ready for a little adventure beyond your ship? Each Quark Expeditions® voyage offers a variety of recreational activities to enhance your polar experience. In addition to the below included activities, helicopter flights to and from the penguin colony are included.

FLIGHTSEEING

While polar landscapes are spectacular from the sea, they are even more striking from the air. On board *Ultramarine* you will experience remarkable aerial perspectives on a 10- to 15-minute flightseeing excursion included in the cost of your voyage.

ZODIAC CRUISING

Zodiacs—rugged inflatable watercraft—are the workhorses of polar expeditions, taking you to places the ships can't access, allowing you to reach remote shorelines, explore shallow inlets and search for unique wildlife. Expedition staff make stepping in

and out of them safe and comfortable, and your Zodiac drivers will provide active interpretation, making the landscape come even more alive.

HIKING

Hiking in Antarctica is free-form and supervised by our expert staff, who set out a perimeter or paths at each landing site within which you are free to explore. While you hike, staff will be available to enhance your experience by answering questions about the wildlife, history and geography of the area.

PRESENTATIONS

Enjoy daily chats with and presentations by our world-class onboard polar experts—expedition guides, specialists, photography guides and other special guests who will introduce you to the fascinating history, biology, ornithology, glaciology and geology of the region, and much, much more.

POLAR PLUNGE

This rite of passage, scheduled only once per expedition, gives you the chance to jump safely into the bracing Antarctic waters under the watchful eye of our staff—and just about every single camera on board!

PHOTOGRAPHY

Documenting your voyage so you can take the memories home is a rewarding experience. Our photography guide will help you hone your skills to capture the beauty of the polar regions.

More information about your Included Activities and Adventure Options, including the necessary experience, physical requirements and cost, is available by contacting your Polar Travel Adviser or travel professional.



Adventure Options



✕ PADDLING EXCURSION

If you're interested in kayaking but would like to try something a bit less demanding than Sea Kayaking, you're the perfect candidate to sign up for a one-time paddle on our stable sit-on-top kayaks—perfect for anyone with minimal or no kayaking experience. Small groups of paddlers will be taken out on calm days, with our expert guides always present to provide instruction and help you connect with the polar sea. Pre-book into one of two priority groups. Any subsequent excursions can be booked on board, and groups will be assigned via a lottery.



🚣 STAND-UP PADDLEBOARDING

Combining a surfboard with a kayak, stand-up paddleboarding will give you a very personal and unique perspective on Antarctica. Conducted in small groups—in calm bays and harbors, in good weather conditions—and accompanied by a safety Zodiac, one-time stand-up paddleboarding excursions can be pre-booked into one of two priority groups. Any subsequent excursions can be booked on board, and groups will be assigned via a lottery.

PLEASE NOTE

Pre-booking is required for all paid activities. We recommend booking early, as spaces fill quickly. Please see your pre-departure guide for a list of provided gear for each Adventure Option.



Dates and Rates

Emperor Penguin Quest: Expedition to Snow Hill

ULTRAMARINE

<i>Dates</i>	<i>Days</i>	<i>Start / End</i>	<i>Solo Panorama</i>	<i>Explorer Triple</i>	<i>Explorer Suite</i>	<i>Balcony Suite</i>	<i>Deluxe Balcony Suite</i>	<i>Terrace Suite</i>	<i>Penthouse Suite</i>	<i>Owner's Suite</i>	<i>Ultra Suite</i>
ANTARCTIC 2023.24											
NOV 12 - 25, 2023	14	Buenos Aires	\$44,995	\$27,995	\$33,995	\$37,995	\$43,995	\$46,995	\$49,995	\$59,995	\$64,995
NOV 24, 2023 - DEC 7, 2023	14	Buenos Aires	\$44,995	\$27,995	\$33,995	\$37,995	\$43,995	\$46,995	\$49,995	\$59,995	\$64,995

<i>Dates</i>	<i>Days</i>	<i>Start / End</i>	<i>Transfer Package</i>			
ANTARCTIC 2023.24						
NOV 12 - 25, 2023	14	Buenos Aires	\$995	\$295	\$295	Included
NOV 24, 2023 - DEC 7, 2023	14	Buenos Aires	\$995	\$295	\$295	Included



Inclusions and Exclusions

Inclusions

RATES INCLUDE:

- Leadership throughout your voyage by our experienced Expedition Team, including shore landings and other activities
- All Zodiac transfers and cruising as per the daily program
- All shore landings as per the daily program
- Shipboard accommodation with daily housekeeping
- All meals, snacks, soft drinks and juices on board throughout your voyage (Please inform us of any dietary requirements as far in advance as possible. Unfortunately, the ships' galleys cannot prepare kosher meals.)
- Select beer and wine during dinner; and coffee, tea and cocoa available around the clock

- Formal and informal presentations by our Expedition Team and guest speakers as scheduled
- A photographic journal documenting the expedition
- A pair of waterproof expedition boots on loan for landings and Zodiac cruising excursions
- An official Quark Expeditions® parka to keep
- Hair dryer and bathrobes in every cabin
- All miscellaneous service taxes and port charges throughout the program
- All luggage handling aboard the ship
- Emergency Evacuation insurance for all passengers to a maximum benefit of USD \$500,000 per person
- One 10- to 15-minute helicopter flightseeing excursion (weather and logistics permitting)

Exclusions

RATES SPECIFICALLY DO NOT INCLUDE:

- Mandatory Transfer Package*
- International airfare
- Passport and applicable visa expenses
- Government arrival and departure taxes not mentioned
- Meals unless otherwise specified
- Baggage, cancellation, interruption and medical travel insurance—strongly recommended
- Excess-baggage fees on international and domestic flights
- Mandatory waterproof pants for Zodiac landing and cruising excursions, or any other gear not mentioned
- Laundry, bar, spa services and other personal charges, unless specified
- Phone and Internet charges (connectivity may vary by location)
- Voluntary gratuity at the end of the voyage for expedition staff and shipboard crew
- Additional overnight accommodation
- Arrival and departure transfers, except where explicitly stated
- Adventure Options not listed in Included Activities

*MANDATORY TRANSFER PACKAGE INCLUDES:

- One night's pre-expedition hotel accommodation in Buenos Aires with breakfast (Note: The number of guests per room is the same as cabin occupancy on the ship. Due to limited availability, travelers who reserve a suite on board are accommodated in standard rooms at the hotel. Triple rooms may not be available.)
- Group flight departing from Buenos Aires' domestic airport (Aeroparque/AEP) to Ushuaia, and returning to Buenos Aires' international airport (Ezeiza/EZE)

- Group transfer from hotel to airport in Buenos Aires
- Group transfer from Ushuaia airport to the ship, and return (Note: Transfer on arrival in Buenos Aires from airport to hotel at the beginning of the journey is not included. Please make your way to the included hotel.)
- Combined airport transfer and express bus tour of Tierra del Fuego National Park after disembarkation in Ushuaia

PACKAGE PRICE: \$995 USD

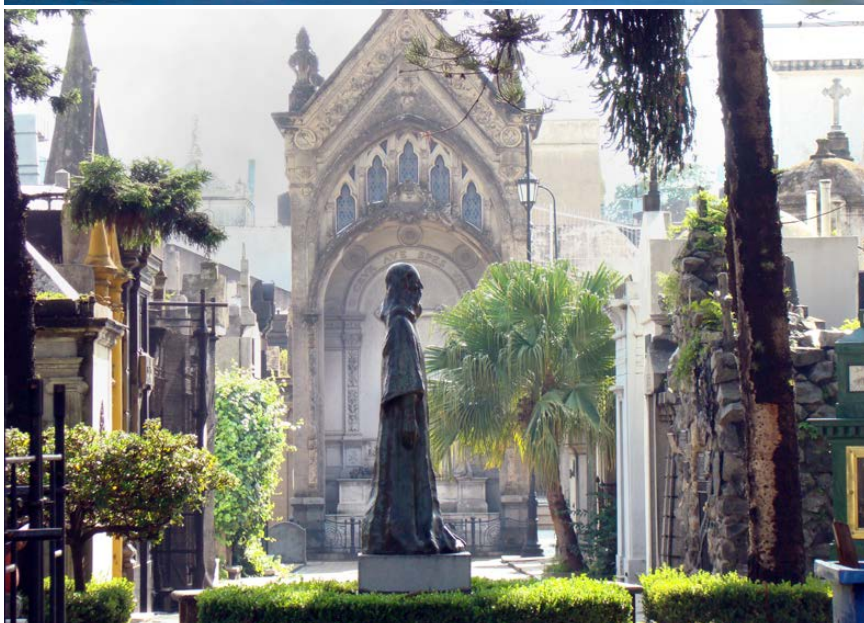
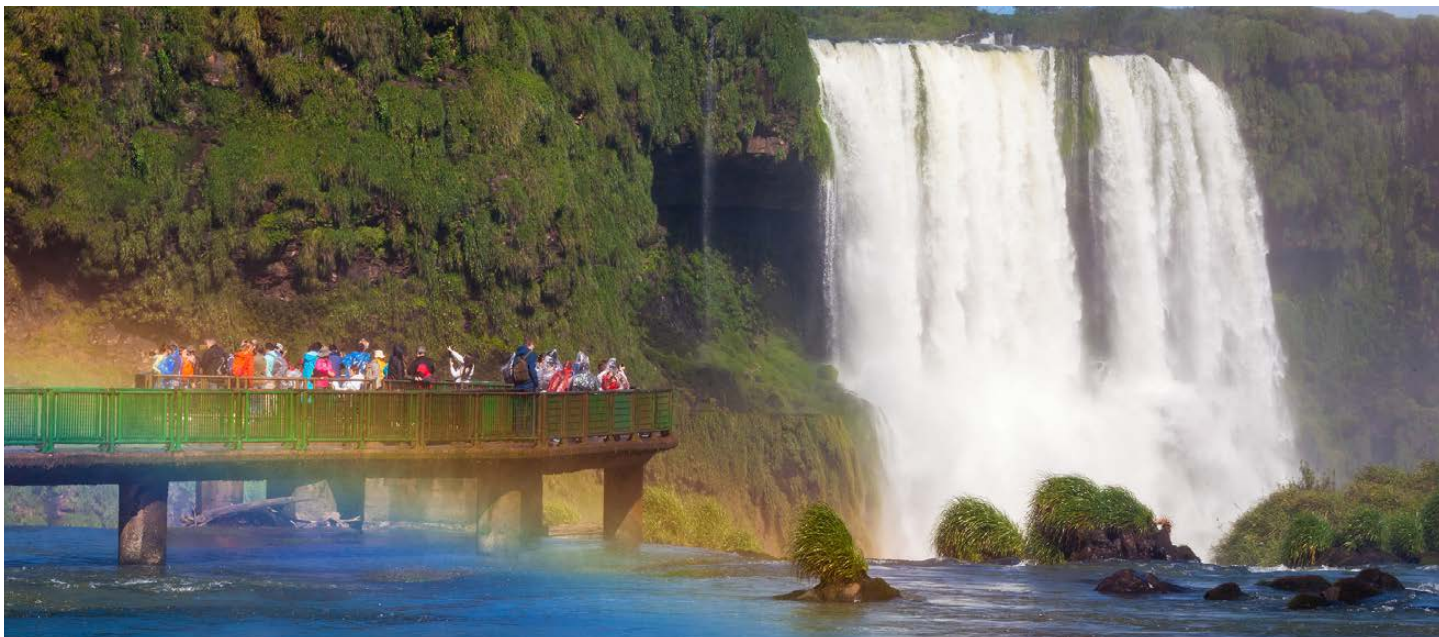


Your Expedition Team

Our Expedition Leaders and their teams bring diverse expertise in subjects as varied as polar history, marine biology, glaciology, ornithology and photography. Their knowledge and enthusiasm will greatly enhance your immersion into the polar environment and further deepen your connection to the Antarctic.

With over 30 years of experience bringing passengers to remote polar regions and an industry-leading staff-to-guest ratio, we know how to safely handle the unexpected. Ensuring this hard-earned experience is passed on, all our expedition staff receive comprehensive training in Quark Academy, which provides hands-on polar expedition training prior to any staff member's first voyage as well as ongoing training for experienced staff.





Extend Your Trip

PRE- AND POST-EXPEDITION TRIP EXTENSIONS

Since you're traveling such a long way, you may want to spend extra time in Buenos Aires. We have a variety of pre- and post-expedition packages in this captivating city, known as the tango capital of the world. Enjoy an extensive city tour, take in a tango show and explore the unique neighborhoods of Recoleta, Palermo and San Telmo. Savor Argentine barbecue at a steakhouse (*parrilla*), then stroll the tree-lined boulevards and marvel at the historic architecture. Take an extended tour from Buenos Aires to Iguazú Falls, and, if you're daring, walk the catwalks over the falls.

To discover the best options for extending your adventure, get in touch with your Travel Professional or a Polar Travel Adviser for seamless, worry-free booking of all trip extensions.

FROM TOP: Iguazú Falls; Recoleta Cemetery; Argentinean asado (barbecue)



Meals on Board

If there is one constant on board, it is that you'll enjoy delicious meals daily. While meal times may change due to landings and wildlife encounters, you'll always be served three well-prepared meals per day. Most dietary restrictions can be accommodated by letting us know prior to your expedition.

Breakfasts and lunches are normally served buffet style, while dinners are served plated. À la carte meals are made at the time of your order, allowing our chefs to prepare each dish to your individual needs, ensuring you receive top-quality meals during the course of your expedition.

Soft drinks and juices are available during meals and when the bar is open; beer and wine are served with dinner; and coffee, tea and water stations are available around the clock—all included in the cost of your package. Spirits, premium wines and champagne are available at extra cost which can be billed to your shipboard account. The well-stocked bars on the ship are open to enjoy with your fellow shipmates in late morning, afternoon and evening.





Alternative Landing Sites

BROWN BLUFF

Brown Bluff, an immense cliff of volcanic rock, towers 2,225 feet (678 meters) over rookeries of Adélie and gentoo penguins, some of which will be incubating their eggs.

DEVIL ISLAND

The Swedish Antarctic Expedition of 1901-04 discovered the narrow island, which is 1 mile (1.6 km) long and has a low summit at each end.

HOPE BAY

Three members of the Swedish Antarctic Expedition (1901-04) spent the winter in a hut on the shores of Hope Bay. The hut is located close to the jetty of Esperanza Station, an Argentine research station.

PAULET ISLAND

Located in the northwestern Weddell Sea, Paulet Island is home to a large Adélie penguin rookery. With a volcanic cone that rises 1,158 feet (353 meters),

the island reminds you that this was once a very active landscape. In addition to penguins, you may be interested in visiting a historic hut built by members of the Swedish Antarctic Expedition of 1901-04. A cross marks the gravesite of crew member Ole Wenersgaard.

SEYMOUR ISLAND

Northeast of Snow Hill Island is a smaller island that was originally mistaken for a cape. Seymour Island is significant for fossil finds and for the remains of the KT Boundary, which marks the transition between the Cretaceous Period (dinosaurs and reptiles) and the Tertiary Period (mammals) of geological times. This era is known for the mass extinction of many forms of life, including dinosaurs.



What to pack on your polar expedition

WHAT TO BRING! Packing for the Polar Regions doesn't have to be daunting, and to make it easier for you, all Quark Expeditions voyages include a Quark parka to keep, and a loan of insulated waterproof boots. Additional suggested items include:

WEATHER CONDITIONS & TEMPERATURES

Polar weather is extremely variable; temperatures may hover around the freezing mark and winds can be strong. The extended daylight warms sheltered areas so that you may sometimes find it warm enough for t-shirts. However, you may encounter rain, snow squalls, fog and white-outs during an expedition and should be ready for any conditions.

TO WEAR ON LANDINGS

- ☐ Base-layer wool or synthetic top
- ☐ Base-layer wool or synthetic bottom
- ☐ Mid-layer warm or fleece top
- ☐ Mid-layer warm or fleece bottom
- ☐ Warm wool or synthetic socks (keep a dry pair in your bag, and bring extras for layering)
- ☐ Glove liners
- ☐ Waterproof gloves or mitts (bring an extra pair)
- ☐ Scarf, buff, or other face protection
- ☐ Warm hat that covers ears (bring an extra)
- ☐ Waterproof pants (mandatory for every Zodiac ride)
- ☐ Waterproof, lightweight backpack or dry sack
- ☐ Polarized sunglasses with UV protection (bring an extra pair)
- ☐ Ski goggles (offers extra protection for adventure options or Zodiac cruising on snowy or windy days)
- ☐ Sunscreen
- ☐ Lip Balm

TO WEAR ONBOARD

- ☐ Complimentary Quark 3-in-1 Parka provided on board (wear the waterproof shell out on deck, and the removable liner indoors to stay comfortable)
- ☐ Comfortable casual clothing like lighter shirts, pants or jeans, etc. (in case the ship gets warm)
- ☐ Comfortable non-slip closed-toed unheeled shoes (flip flops, sandals or slip-on shoes should not be worn on board due to safety concerns)

ADDITIONAL ITEMS

- ☐ Swimsuit (for the Polar Plunge! Some vessels may also have a pool, hot tub, sauna and/or steam room. See your ship book for details.)
- ☐ Light warm jacket to wear during travel to the ship
- ☐ Workout attire (for the fitness center!)
- ☐ Binoculars
- ☐ Hand and feet warmers
- ☐ Camera with charger and extra batteries
- ☐ Extra memory or laptop with spare storage (for saving photos)
- ☐ Waterproof cell phone case or rain sleeve for camera
- ☐ Lens cloth for camera
- ☐ Earplugs and eye masks for sleeping
- ☐ Voltage converters and plug adapters (see ship book for details)
- ☐ Personal alarm such as mobile phone, watch, or alarm clock
- ☐ Moisturizer for face and hands (polar air can be dry)
- ☐ Extra pair of prescription glasses or contact lenses
- ☐ Reusable waterproof bags or plastic bags with zippers (to keep small items organized and cameras dry)
- ☐ Seasickness, indigestion, headache, or other medications
- ☐ Hand sanitizer
- ☐ Passport, visas, immunization and vaccination records, travel documents, etc. (as required)
- ☐ Small amount of local currency (see pre-departure book for more details)
- ☐ Water bottle (a collapsible reusable water bottle will be provided onboard)

Scan this QR code to watch our video on what to pack before you go!

